



# St Thomas of Canterbury School Newsletter

Week ending Friday 27<sup>th</sup> September 2024

Dear parents and carers,

In the Gospel on Sunday, we heard how Jesus, while looking after a child, said 'Anyone who welcomes a little child such as this in my name, welcomes me; and anyone who welcomes me, welcomes not me but the one who sent me.' This was a particularly pertinent reading for the week as today, we had our Welcome Assembly for our new Reception children and their families. God certainly felt present and welcome amongst us. Thank you so much to those parents and families who were able to join us.

I am proud to say that, this week, we found out that our school has been awarded our second Primary Science Quality Mark. This is given to schools who have shown that they are committed to science education and in developing children's science capital. I would like to thank our dedicated staff for all they do for science in our school and a very big thank you to Miss Wathall who has spent a great deal of time supporting staff as well as putting our evidence for the award together.

The presentation from our parents' information event, along with a video about maths at St Thomas', have now been placed on our school website. We would like to ask for feedback both from those of you who were able to attend the event, and also from those who were not, to see how we can improve and be more inclusive next time. Please use the link below to provide this information. Many thanks to those who have already provided this information.  
<https://forms.gle/u9jo84hZ34wja6s5A>

Have a lovely weekend everyone  
God bless

### Safeguarding Reminders

Please line up against the fences when waiting to enter school, ensuring there is enough room for other pedestrians to get by safely on the footpath. Thank you.

We have several children with severe allergies and so are a nut free school. Please check the ingredients of food that children are bringing in to ensure they do not contain nuts. If we are unsure whether or not a food does contain nuts, to ensure the safety of all of our children, we will need to err on the side of caution and ask for an alternative. Thank you

### Autumn Term PE Days

Reception	Friday AM
Year 1	Monday PM & Friday AM
Year 2	Monday PM & Thursday AM
Year 3	Tuesday AM & Thursday PM
Year 4	Tuesday AM & Thursday PM
Year 5	Tuesday PM & Thursday AM
Year 6	Monday AM & Thursday AM

AM - children come to school in their PE kit and bring their uniform to change into.

PM - children should come dressed in their uniform, with their PE kit to change into.

### School Calendar

- Mon 30<sup>th</sup> Sept**- 14:15 Y3 & Y6 Open Afternoon
- Tues 1<sup>st</sup> Oct** – 14:15 Y2 & Y4 Open Afternoon
- Weds 2<sup>nd</sup> Oct** - 14:15 Y1 & Y5 Open Afternoon
- Weds 2<sup>nd</sup> Oct** – Friends of St Thomas PTA Meeting – Abbey Pub, Woodseats 7:30pm – 9:00pm.
- Tues 1<sup>st</sup> – Fri 4<sup>th</sup> Oct** – Book Fair
- Weds 9<sup>th</sup> Oct** – Individual and sibling photos
- Fri 18<sup>th</sup> Oct** – 09:00 Year 6 Class Assembly
- Fri 18<sup>th</sup> Oct** – School Disco
- Tues 22<sup>nd</sup> Oct** – 17:00 Reception 2025 Prospective Parent event
- Weds 23<sup>rd</sup> Oct** – 13:30 Reception 2025 Prospective Parent event
- Fri 25<sup>th</sup> Oct** - Inset Day (No pupils in school)
- Mon 28<sup>th</sup> Oct – Friday 1<sup>st</sup> Nov - Half Term**
- Mon 4<sup>th</sup> Nov** – Pupils return to school
- Fri 8<sup>th</sup> Nov** – 09:00 Year 5 Class Assembly
- Mon 11<sup>th</sup> Nov – 4pm Spring 1 Breakfast & Afterschool club bookings open
- Thurs 21<sup>st</sup> Nov** – 15:30 – 17:45 Parents Evening
- Tues 26<sup>th</sup> Nov** – 15:30 – 17:45 Parents Evening
- Fri 29<sup>th</sup> Nov** – 09:00 Year 4 Class Assembly
- Thurs 5<sup>th</sup> Dec** – Pupil Flu Vaccinations
- Mon 9<sup>th</sup> Dec** – 14:00 Winter Warmer Performance
- Tues 10<sup>th</sup> Dec** – Infant Christmas Dinner
- Weds 11<sup>th</sup> Dec** – Junior Christmas Dinner
- Fri 13<sup>th</sup> Dec** – 14:00 Traditional Winter Warmer in Church
- Mon 16<sup>th</sup> Dec** – 14:30 Nativity Performance for Year 2 Parents
- Tues 17<sup>th</sup> Dec** – 14:30 Nativity Performance for Year 1 Parents
- Tues 17<sup>th</sup> Dec** – The Hive Pantomime Trip
- Weds 18<sup>th</sup> Dec** – 09:15 Pre-school Christmas Performance
- Weds 18<sup>th</sup> Dec** – 14:30 Nativity Performance for Reception parents
- Fri 20<sup>th</sup> Dec** – School Finishes at 12pm
- Mon 23<sup>rd</sup> December – Friday 3<sup>rd</sup> January**
- Christmas Break**
- Mon 6<sup>th</sup> Jan** – Pupils return to school
- Tues 7<sup>th</sup> Jan** – Year 4 Swimming Lesson
- Tues 14<sup>th</sup> Jan** – Year 4 Swimming Lesson
- Tues 21<sup>st</sup> Jan** – Year 4&6 Swimming Lesson
- Fri 24<sup>th</sup> Jan** – 09:00 Year 3 Class Assembly

**Tues 28<sup>th</sup> Jan** – Year 4&6 Swimming Lesson

**Tues 4<sup>th</sup> Feb** – Year 4 &6 Swimming Lesson

**Tues 11<sup>th</sup> Feb** – Year 5 &6 Swimming Lesson

**Tues 11<sup>th</sup> Feb** – Internet Safety day

**Monday 17<sup>th</sup> – Friday 21<sup>st</sup> February**

**February Half Term**

**Mon 24<sup>th</sup> Feb** - Inset Day (No pupils in school)

**Tues 25<sup>th</sup> Feb** – Pupils return to school

**Tues 25<sup>th</sup> Feb** - Year 5 Swimming Lesson

**Fri 28<sup>th</sup> Feb** – 09:00 Year 2 Class Assembly

**Tues 4<sup>th</sup> Mar** – Year 5 Swimming Lesson

**Weds 5<sup>th</sup> – Mon 10<sup>th</sup> March** – Book Fair

**Thurs 6<sup>th</sup> Mar** – World Book Day

**Tues 11<sup>th</sup> Mar** – Year 5 Swimming Lesson

**Tues 13<sup>th</sup> Mar** - 15:30 – 17:45 Parents Evening

**Tues 18<sup>th</sup> Mar** - 15:30 – 17:45 Parents Evening

**Tues 18<sup>th</sup> Mar** – Year 5 Swimming Lesson

**Fri 21<sup>st</sup> Mar** – 09:00 Year 1 Class Assembly

**Monday 31<sup>st</sup> – Friday 11<sup>th</sup> April**

**Easter Holidays**

**Mon 14<sup>th</sup> April** – Pupils return to school

**Thurs 17<sup>th</sup> April** – Easter Egg Decorating Competition

**Fri 18<sup>th</sup> April** – Good Friday (No pupils in school)

**Mon 21<sup>st</sup> April** – Easter Monday (No pupils in school)

**Fri 2<sup>nd</sup> May** – 09:00 Reception Class Assembly

**Mon 5<sup>th</sup> May** – Mayday Bank Holiday (No pupils in school)

**Mon 12<sup>th</sup> – Thurs 15<sup>th</sup> May** – SATS Week

**Weds 21<sup>st</sup> – Fri 23<sup>rd</sup> May** – Year 6 Residential

**Monday 26<sup>th</sup> – Friday 30<sup>th</sup> May**

**Spring Bank Half Term**

**Mon 2<sup>nd</sup> June** – Pupils return to school

**Mon 16<sup>th</sup> June** – Class Photos

**Weds 18<sup>th</sup> – Fri 20<sup>th</sup> June** – Year 5 Residential

**Mon 23<sup>rd</sup> June**- 14:15 Y3 & Y6 Open Afternoon

**Tues 24<sup>th</sup> June** – 14:15 Y2 & Y4 Open Afternoon

**Weds 25<sup>th</sup> June** - 14:15 Y1 & Y5 Open Afternoon

**Weds 16<sup>th</sup> July** – Pre-School Family Fun Day (Pre-school closed)

**Fri 18<sup>th</sup> July** – Whole School Sports day at EIS

**Tues 22<sup>nd</sup> July** – Last day of School Year

**Tues 22<sup>nd</sup> July** – 14:30 Year 6 Leaver's Assembly

**Weds 23<sup>rd</sup> July** – Inset Day (No pupils in school)

### Whole School Attendance

Our attendance last week was 98.1 %

Our attendance this week is 96.7%

### Alter Servers

We would like to recruit some new Altar Servers to join our current servers. It's open to anyone who has made their first Holy Communion. If you would like to become a server then please email [ktgrady@gmail.com](mailto:ktgrady@gmail.com) . Practice sessions will be arranged in a few weeks time.

### School Start and finish times

Gates will open at 08:35, please remember that the children remain in your care until we bring them in to school at 8.45 and return to your care at the end of the day. Please ensure your child is supervised before the whistle goes at start of the day and after handover. Neither children nor adults should be walking through or on the grass at the side of the car park. Infants finish at 15:15 and Juniors finish at 15:20. Children that arrive after 8:45 will receive a late mark on the register.

### Individual and sibling photos

We will be having our individual and sibling photos on Wednesday 9th October. If you would like your children to have a sibling photo (including any non-school siblings), please bring them to the school office between 8am-8:30am. **We will not be taking any sibling photos during the school day, therefore if you do not bring your children to the before school session, they will not have a sibling photo.**

### Head lice

We have recently had a number of parents reporting that their children have had head lice, please could you regularly check your child's hair. Please see the below link for more guidance.

<https://www.nhs.uk/conditions/head-lice-and-nits/>

### Admissions Policy 2026-27 consultation

We are consulting on our admissions arrangements for pupils applying for places in the year beginning September 2026. A copy of our draft arrangements and details about how you can share your views or questions can be found on our website at <http://www.st-tc.co.uk/admissions/proposed-admissions-policy-3>

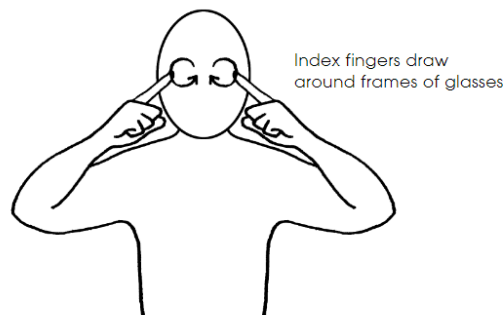
### Louise Haigh Christmas Card Competition

Louise Haigh, MP, is running a Christmas card competition and is asking all primary schools across the constituency to take part! The theme for this year's card is a 'Christmas and Local Transport, and it should be as colourful and fun as possible. The closing date for all entries is: Friday 22<sup>nd</sup> November and the winning entry will get a prize and be used as her official card. See the attached letter for more information.

### Makaton Sign of the Week

This week's sign is **Glasses/spectacles**. Please click this link to see how it is done!

<https://youtu.be/YU3fR-QXixM>





# A Safeguarding Policy Front Sheet

**Name of Education Setting: St Thomas of Canterbury School Academic Year 2023 - 2024**

We all have a statutory duty to “safeguard and promote the welfare of children”, ([Working together to safeguard children, DfE 2015, page 5](#))

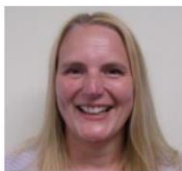
If you have any concerns about the health and safety of a child or young person at this education setting or feel that something may be troubling them, you should share this information with an appropriate member of staff straight away.

Some issues such as a child’s appearance, hygiene, general behaviour, can be shared with any teacher or member of support staff in this setting. Do not worry about reporting small matters – we would rather that you tell us things which turn out to be small than miss a worrying situation.

**However, if you think that a child, a young person or an adult who cares for them has been or might be harmed, please talk to one of the people below immediately.**

**You can ask any member of staff to find them and ask them to speak to you straight away about a confidential and urgent matter.**

## The people you can talk to are:



### Our Designated Safeguarding Lead is:

Name: Mrs L Clements

Their office is located next to the school office.

Their tel. no / mobile no is 01142745597



### Our Designated Safeguarding Deputy for under 5’s is:

Name: Mrs R Hanson

Their office is located next to the school office.

Their tel. no / mobile no is 01142745597



### Our Designated Safeguarding Deputy is:

Name: Ms D Swain

Their office is located next to the school office.

Their tel. no / mobile no is 01142745597



### Our Designated Safeguarding Deputy is:

Name: Mr M Richardson

Their office is located next to the school office.

Their tel. no / mobile no is 01142745597

An allegation or disclosure involving someone working with children in a paid or unpaid capacity **must** be reported directly to the Head Teacher, Principal or Senior Manager, unless it involves them and then it should be reported directly to the Chair of the Governing Body or Management Committee.

# INTRODUCING CASHPOT FOR SCHOOLS

Download and opt-in with Asda Rewards  
and we will donate **££s** to schools.

**CASHPOT  
FOR  
SCHOOLS**



## HERE'S HOW:

- 1** Download the Asda Rewards app and opt-in to Cashpot for Schools.
- 2** Choose your primary school
- 3** Shop in-store across Asda & George, and scan your Asda Rewards app at the checkout.
- 4** Shopping online? Simply log in to Asda.com using the same details as your Asda Rewards account.
- 5** We'll do the rest!  
We donate ££s to your chosen school every time you shop, so they can spend it on exactly what they need.

With  
**Parentkind**



Selected stores. Minimum spend £2+. Exclusions apply including Asda Express & George.com. Subject to availability. UK 18+. App & Opt in required.  
0.5% of the value of a customer's eligible shop is donated. Publicly funded primary schools, must register with Parentkind charity 1072833.  
Full T&C's at [asda.com/cashpotforschools](https://asda.com/cashpotforschools). Rewards T&C's at [asda.com/rewards/terms](https://asda.com/rewards/terms). Ends 30.11.24

Sheffield

**Every School day matters!**

enjoy • learn • achieve

[sheffield.gov.uk/schoolmatters](http://sheffield.gov.uk/schoolmatters)

## Penalty Notice Fines for School Attendance are Changing!

With the introduction of the new National Framework for Penalty Notices, the following changes will come into force for term time leave taken and irregular attendance.

### Per Parent, Per Child

Penalty Notice Fines will now be issued to each parent, for each child that was absent.

For example: 3 siblings absent for term time leave, would result in each parent receiving 3 separate fines.

### First Offence

The first time a Penalty Notice is issued (after 19<sup>th</sup> August) for Term Time Leave or Irregular Attendance this will be considered the first offence, and the amount will be:

£160 per parent, per child paid within 28 days.

Reduced to £80 per parent, per child if paid within 21 days.

### 5 consecutive days of term time leave

Penalty Notice Fines will be issued for Term Time Leave of 5 or more consecutive days. Where there is 4 days of absence during a week where there is also a training day, a penalty notice may still be issued.

### 10 sessions of unauthorised absence in a 10-week period

Penalty Notice Fines can also be considered when there have been 10 sessions of unauthorised absence in a 10-week period.

### Second Offence (within 3 years)

The second time a Penalty Notice is issued for Term Time Leave or Irregular Attendance the amount will be:

£160 per parent, per child paid within 28 days.

### Third Offence and Any Further Offences (within 3 years)

The third time an offence is committed for Term Time Leave or Irregular Attendance a Penalty Notice will not be issued, and the case will be presented straight to the Magistrates' Court. Magistrates' fines can be up to £2500 per parent, per child.

Cases found guilty in Magistrates' Court can show on the parent's future DBS certificate.