



# St Thomas of Canterbury School Newsletter

Week ending Friday 29<sup>th</sup> November 2024

Dear Parents and Carers,

I would like to start by thanking you for coming out in the cold to come into school for parents' evening. I hope the time was useful and that receiving the term report at this time was helpful. If you have any feedback, please do let me know.

On Sunday, we celebrated the feast of Christ the King. This feast day reminds us that, in our Baptism, we too were anointed as priests, prophets and as kings. We remember that we are able to be kings like Jesus by following his example of loving one another each day and every day.

This coming Sunday, the first Sunday of Advent, marks the beginning of our preparations for the coming of Jesus, our King at Christmas. Our Y4 assembly today helped us to know more about the meaning of the advent candles and how we can be ready for Jesus. This first candle is for Hope. We will hear the prophet's words of hope when they described for us what Jesus would be like. Thank you Y4 and Mr Woodhouse.

I hope that you all have a lovely weekend.

God bless  
Mrs Clements

Mrs L. C. Clements  
Headteacher

## Safeguarding Reminder

Please remind children that it is not safe to walk through the car park or the grassy areas at the side of the parking spaces. Please do not walk through the car pack gates. These are automatic gates and close after a car has entered or left the car park.

## Lateness

We have noticed a larger amount of children arriving late to school in the morning. Please remember that gates close at 08:45 and any children arriving late than this will receive a late mark in the register.

## School Calendar

**Weds 4<sup>th</sup> Dec 9:00** – SEN Parent coffee morning

**Thurs 5<sup>th</sup> Dec** – Pupil Flu Vaccinations

**Mon 9<sup>th</sup> Dec** – 14:00 Winter Warmer Performance

**Tues 10<sup>th</sup> Dec** – Infant Christmas Dinner

**Weds 11<sup>th</sup> Dec** – Junior Christmas Dinner

**Fri 13<sup>th</sup> Dec** - Christmas Jumper Day

**Fri 13<sup>th</sup> Dec** – 14:00 Traditional Winter Warmer in Church

**Mon 16<sup>th</sup> Dec** – 14:30 Nativity Performance for Year 2 Parents

**Tues 17<sup>th</sup> Dec** – 14:30 Nativity Performance for Year 1 Parents

**Tues 17<sup>th</sup> Dec** – The Hive Pantomime Trip

**Weds 18<sup>th</sup> Dec** – 09:15 Pre-school Christmas Performance

**Weds 18<sup>th</sup> Dec** – 14:30 Nativity Performance for Reception parents

**Fri 20<sup>th</sup> Dec** – School Finishes at 12pm

**Mon 23<sup>rd</sup> December – Friday 3<sup>rd</sup> January**

## Christmas Break

**Mon 6<sup>th</sup> Jan** – Pupils return to school

**Tues 7<sup>th</sup> Jan** – Year 4 Swimming Lesson

**Tues 14<sup>th</sup> Jan** – Year 4 Swimming Lesson

**Tues 21<sup>st</sup> Jan** – Year 4&6 Swimming Lesson

**Fri 24<sup>th</sup> Jan** – 09:00 Year 3 Class Assembly

**Tues 28<sup>th</sup> Jan** – Year 4&6 Swimming Lesson

**Tues 4<sup>th</sup> Feb** – Year 4 &6 Swimming Lesson

**Fri 7<sup>th</sup> Feb** – School Disco

**Tues 11<sup>th</sup> Feb** – Year 5 &6 Swimming Lesson

**Tues 11<sup>th</sup> Feb** – Internet Safety day

**Monday 17<sup>th</sup> – Friday 21<sup>st</sup> February**

## February Half Term

**Mon 24<sup>th</sup> Feb** - Inset Day (No pupils in school)

**Tues 25<sup>th</sup> Feb** – Pupils return to school

**Tues 25<sup>th</sup> Feb** - Year 5 Swimming Lesson

**Fri 28<sup>th</sup> Feb** – 09:00 Year 2 Class Assembly

**Tues 4<sup>th</sup> Mar** – Year 5 Swimming Lesson

**Thurs 6<sup>th</sup> Mar** – World Book Day

**Fri 7<sup>th</sup> Mar** – Book Fair

**Tues 11<sup>th</sup> Mar** – Year 5 Swimming Lesson

**Tues 13<sup>th</sup> Mar** - 15:30 – 17:45 Parents Evening

**Tues 18<sup>th</sup> Mar** - 15:30 – 17:45 Parents Evening

**Tues 18<sup>th</sup> Mar** – Year 5 Swimming Lesson

**Fri 21<sup>st</sup> Mar** – 09:00 Year 1 Class Assembly

## Monday 31<sup>st</sup> – Friday 11<sup>th</sup> April

### Easter Holidays

- Mon 14<sup>th</sup> April** – Pupils return to school
- Thurs 17<sup>th</sup> April** – Easter Egg Decorating Competition
- Fri 18<sup>th</sup> April** – Good Friday (No pupils in school)
- Mon 21<sup>st</sup> April** – Easter Monday (No pupils in school)
- Fri 2<sup>nd</sup> May** – 09:00 Reception Class Assembly
- Mon 5<sup>th</sup> May** – Mayday Bank Holiday (No pupils in school)
- Fri 9<sup>th</sup> May** - Year 3 trip to Creswell Crags
- Mon 12<sup>th</sup> – Thurs 15<sup>th</sup> May** – SATS Week
- Fri 16<sup>th</sup> May** – School Disco
- Weds 21<sup>st</sup> – Fri 23<sup>rd</sup> May** – Year 6 Residential
- Monday 26<sup>th</sup> – Friday 30<sup>th</sup> May**  
**Spring Bank Half Term**
- Mon 2<sup>nd</sup> June** – Pupils return to school
- Mon 16<sup>th</sup> June** – Class Photos
- Weds 18<sup>th</sup> – Fri 20<sup>th</sup> June** – Year 5 Residential
- Mon 23<sup>rd</sup> June** - 14:15 Y3 & Y6 Open Afternoon
- Tues 24<sup>th</sup> June** – 14:15 Y2 & Y4 Open Afternoon
- Weds 25<sup>th</sup> June** - 14:15 Y1 & Y5 Open Afternoon
- Weds 16<sup>th</sup> July** – Pre-School Family Fun Day (Pre-school closed)
- Fri 18<sup>th</sup> July** – Whole School Sports day at EIS
- Tues 22<sup>nd</sup> July** – Last day of School Year
- Tues 22<sup>nd</sup> July** – 14:30 Year 6 Leaver’s Assembly
- Weds 23<sup>rd</sup> July** – Inset Day (No pupils in school)

## Free School Meal Eligibility

We have seen an unprecedented rise in FSM eligibility in schools across Sheffield in the last few years. As the school will receive additional funding based on the number of children who receive FSMs, not only will your child receive a FSM and free school milk but also financial support towards school trips in the future. With this in mind we want to make sure that our parents are aware of how to check their eligibility. **Even if you don't think you are eligible, it is worth your while to check.**

You can check your eligibility online by following this link: <https://www.sheffield.gov.uk/utilities/form/schools-and-childcare/free-school-meals-start>

## Water bottles

We have noticed an increasing number of children are not bringing in a water bottle and are having to take plastic cups from the school office. From next week, 25<sup>th</sup> Nov, we will not be supplying spare plastic cups as this is creating additional waste for school as well as not being an economical option. Please make sure you are sending your child to school with a water bottle every day.

## Job Adverts

We currently have 2 vacancies at school, for a caretaker and a cleaner. Please see the attached job adverts. If you need any further information, please contact the school office.

## Parking around school

We have been contacted multiple times recently regarding cars that are parking illegally near school. This can be dangerous and could cause an accident.

The following are examples of incorrect parking that can be reported to the enforcement team:

parking on yellow lines, including adjacent to footways and verges

stopping on zig zag lines by a crossing or outside a school

using a disabled bay without a valid Blue Badge

double parking

dropped kerb access – in front of driveways

If you see a car that is causing danger to other road users or pedestrians then please use this link to report them.

<https://www.sheffield.gov.uk/parking/report-incorrectly-parked-vehicle>

## Autumn Term PE Days

Reception	Friday AM
Year 1	Monday PM & Friday AM
Year 2	Monday PM & Thursday AM
Year 3	Tuesday AM & Thursday PM
Year 4	Tuesday AM & Thursday PM
Year 5	Tuesday PM & Thursday AM
Year 6	Monday AM & Thursday AM

AM - children come to school in their PE kit and bring their uniform to change into.

## Whole School Attendance

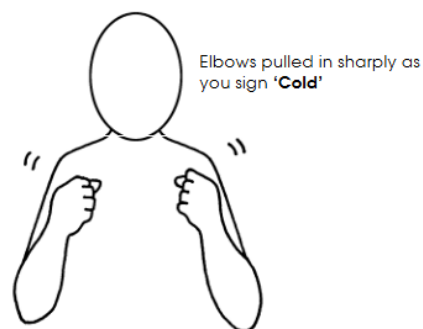
Class	Last Week	This Week
Year 1	96.6%	92.2
Year 2	97.3%	91.9
Year 3	96.3%	91.8
Year 4	97.9%	85.5
Year 5	98%	92.3
Year 6	95.2%	92.7

## Makaton Sign of the Week

This week's sign is **Winter**.

Please click this link to see how it is done!

<https://youtu.be/eXAxmCY5eRM>





# Winter Warmer Raffle

How it works: Each class has a class colour which is below. On the own clothes day, 29th November, we will be collecting any gift donations in the colour of your child's class colour. If you can't think of anything in your class colour you could wrap it up in that colour! The Winter Warmer class hampers will then be raffled off to raise funds for the school. All donations welcome from chocolate coins, books, a toy, snacks, candles, drinks and everything else in-between!

To win a hamper visit Parent Pay for raffle tickets.

Don't forget you can buy raffle tickets for friends and family!

**Raffle tickets are £1 each**

Donations 29th November

The draw will take place on 9th December during the Winter Warmer

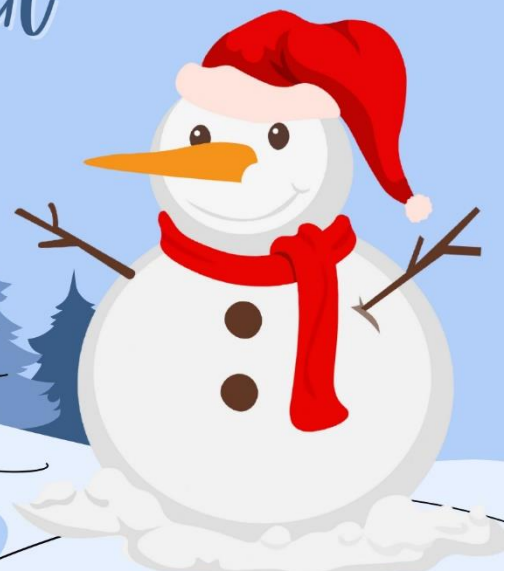
## Christmas own clothes day

Friday 29th November

## Winter Warmer

Monday 9th December

**NURS RY = RAINBOW**  
**RECEPTION = WHITE**  
**YEAR 1 = GREEN**  
**YEAR 2 = RED**  
**YEAR 3 = PURPLE**  
**YEAR 4 = BLUE**  
**YEAR 5 = SILVER**  
**YEAR 6 = GOLD**



Thank you from the  
Friends of St Thomas.





## A Safeguarding Policy Front Sheet

**Name of Education Setting: St Thomas of Canterbury School Academic Year 2024 - 2025**

We all have a statutory duty to “safeguard and promote the welfare of children”, ([Working together to safeguard children, DfE 2015, page 5](#))

If you have any concerns about the health and safety of a child or young person at this education setting or feel that something may be troubling them, you should share this information with an appropriate member of staff straight away.

Some issues such as a child’s appearance, hygiene, general behaviour, can be shared with any teacher or member of support staff in this setting. Do not worry about reporting small matters – we would rather that you tell us things which turn out to be small than miss a worrying situation.

**However, if you think that a child, a young person or an adult who cares for them has been or might be harmed, please talk to one of the people below immediately.**

**You can ask any member of staff to find them and ask them to speak to you straight away about a confidential and urgent matter.**

### The people you can talk to are:



#### Our Designated Safeguarding Lead is:

Name: Mrs L Clements

Their office is located next to the school office.

Their tel. no / mobile no is 01142745597



#### Our Designated Safeguarding Deputy for under 5’s is:

Name: Mrs R Hanson

Their office is located next to the school office.

Their tel. no / mobile no is 01142745597



#### Our Designated Safeguarding Deputy is:

Name: Ms D Swain

Their office is located next to the school office.

Their tel. no / mobile no is 01142745597



#### Our Designated Safeguarding Deputy is:

Name: Mr M Richardson

Their office is located next to the school office.

Their tel. no / mobile no is 01142745597

An allegation or disclosure involving someone working with children in a paid or unpaid capacity **must** be reported directly to the Head Teacher, Principal or Senior Manager, unless it involves them and then it should be reported directly to the Chair of the Governing Body or Management Committee.



## Penalty Notice Fines for School Attendance are Changing!

With the introduction of the new National Framework for Penalty Notices, the following changes will come into force for term time leave taken and irregular attendance.

### Per Parent, Per Child

Penalty Notice Fines will now be issued to each parent, for each child that was absent.

For example: 3 siblings absent for term time leave, would result in each parent receiving 3 separate fines.

### First Offence

The first time a Penalty Notice is issued (after 19<sup>th</sup> August) for Term Time Leave or Irregular Attendance this will be considered the first offence, and the amount will be:

£160 per parent, per child paid within 28 days.

Reduced to £80 per parent, per child if paid within 21 days.

### 5 consecutive days of term time leave

Penalty Notice Fines will be issued for Term Time Leave of 5 or more consecutive days. Where there is 4 days of absence during a week where there is also a training day, a penalty notice may still be issued.

### 10 sessions of unauthorised absence in a 10-week period

Penalty Notice Fines can also be considered when there have been 10 sessions of unauthorised absence in a 10-week period.

### Second Offence (within 3 years)

The second time a Penalty Notice is issued for Term Time Leave or Irregular Attendance the amount will be:

£160 per parent, per child paid within 28 days.

### Third Offence and Any Further Offences (within 3 years)

The third time an offence is committed for Term Time Leave or Irregular Attendance a Penalty Notice will not be issued, and the case will be presented straight to the Magistrates' Court. Magistrates' fines can be up to £2500 per parent, per child.

Cases found guilty in Magistrates' Court can show on the parent's future DBS certificate.